



International workshop

CATTLE SECTOR DEVELOPMENT IN TRANSITION COUNTRIES OF CEE

22 August 2008, Vilnius - Le Meridien Villon Convention Centre

in the context of the 59th EAAP Annual Meeting

**Workshop jointly organized by:
EAAP Cattle Network Working Group
EAAP CEEC Contact Working Group
EAAP Cattle Commission**

22 August 2008, Vilnius

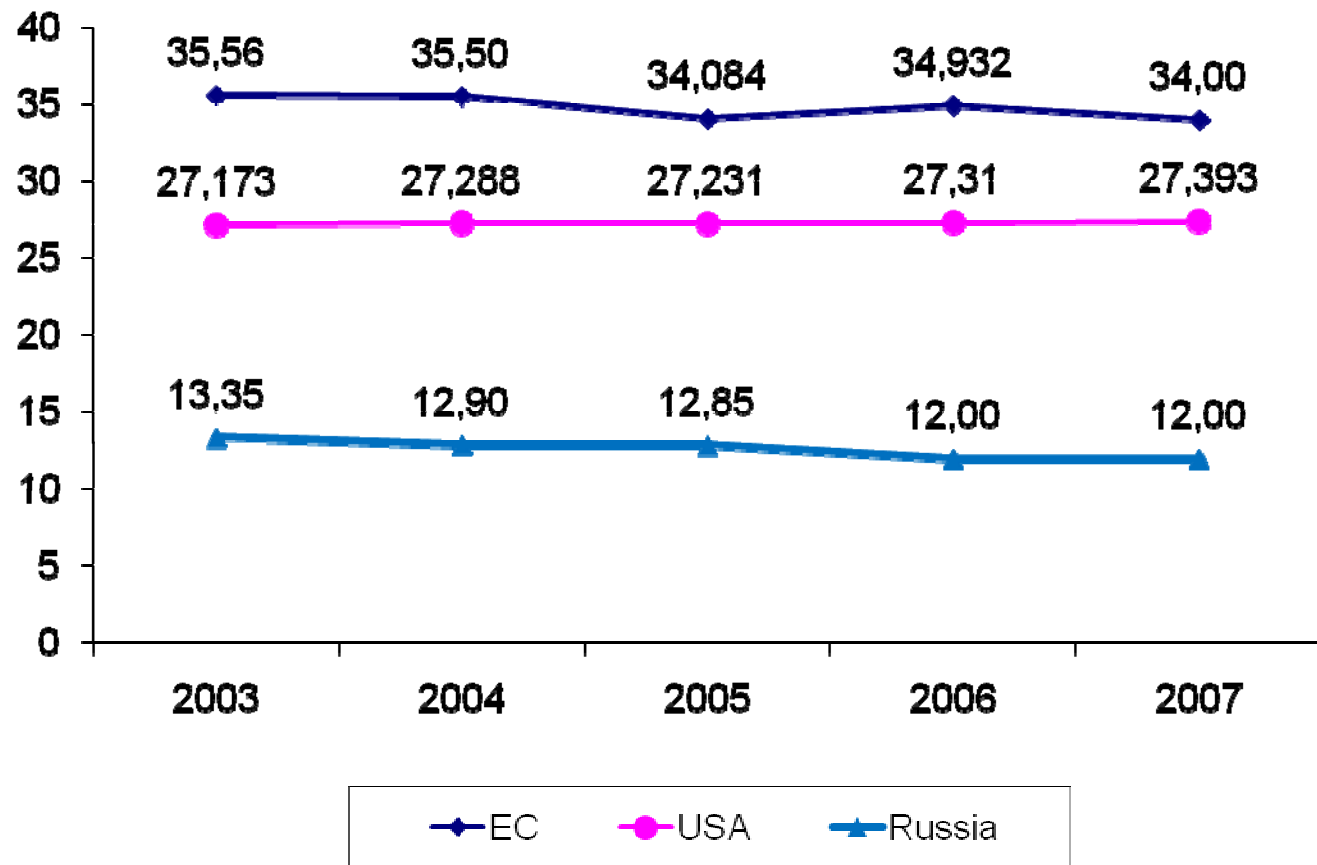
Production of milk in Russian Federation (mln.tons)

Country (region)	Production			Import			Export		
	2005	2006	2007	2005	2006	2007	2005	2006	2007
Total	642.3	656.8	674.6	43.6	45.2	45.5	45.4	47.5	48.0
European Union	146.9	145.5	154.2	2.0	2.0	2.0	13.7	12.8	12.7
Asia	216.2	227.8	240.3	21.8	23.6	23.7	4.5	4.4	4.5
United States	80.3	82.5	83.5	2.3	2.0	2.0	4.6	4.7	4.8
Russia	31.1	31.2	31.4	2.2	2.6	2.7	0.3	0.2	0.2



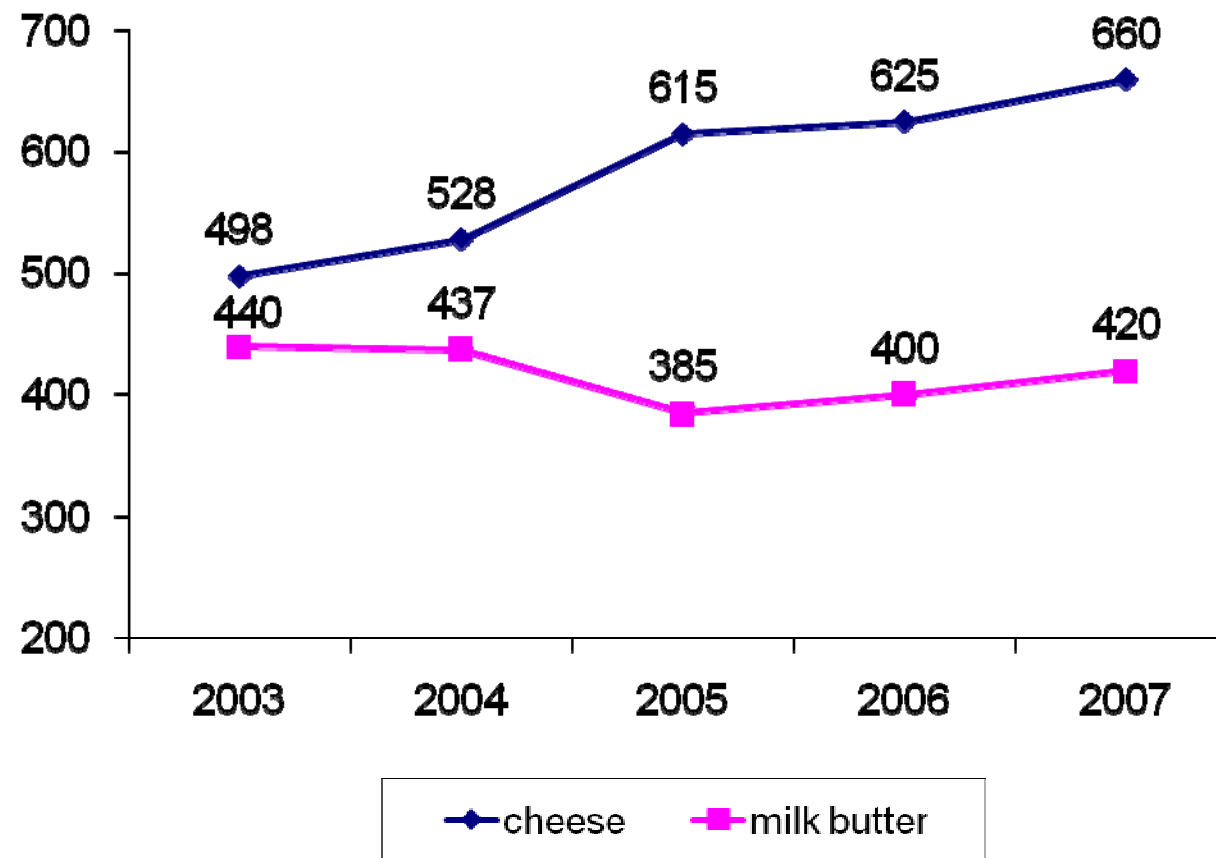
22 August 2008, Vilnius

Milk consumption in Russian Federation (mln.tons)



22 August 2008, Vilnius

Consumption of milk products in Russian Federation (thousand tons)



22 August 2008, Vilnius

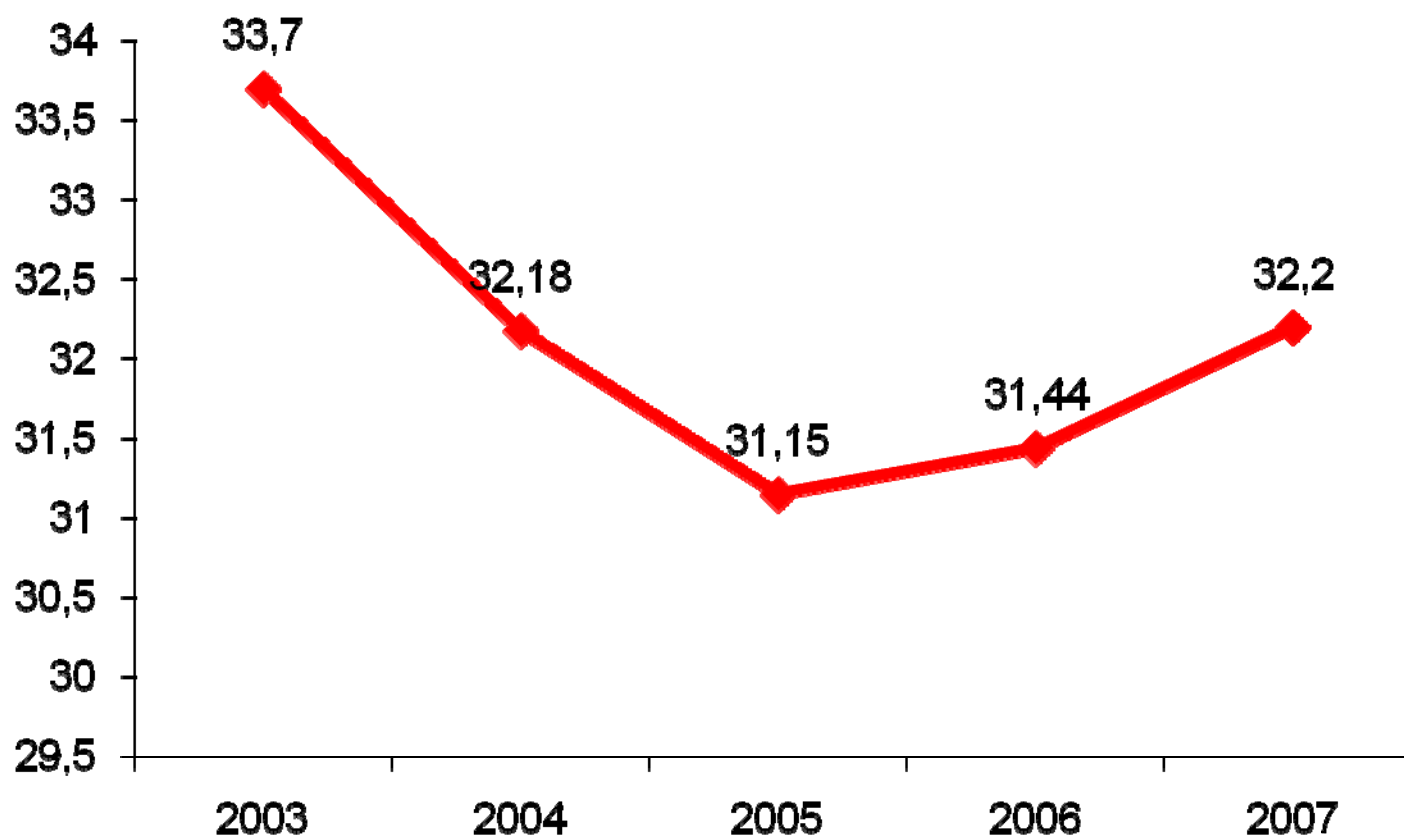
Consumption of milk and milk products per capita (kg/year)

Product	Amount required to the norms of RAMS	Russia	Developed foreign countries
Milk	114	64	112-182
Sour milk drinks	32	14.4	29-46
Cheese	21	6.2	18-29
Milk butter	6.1	4.2	2.1-7.7

22 August 2008, Vilnius

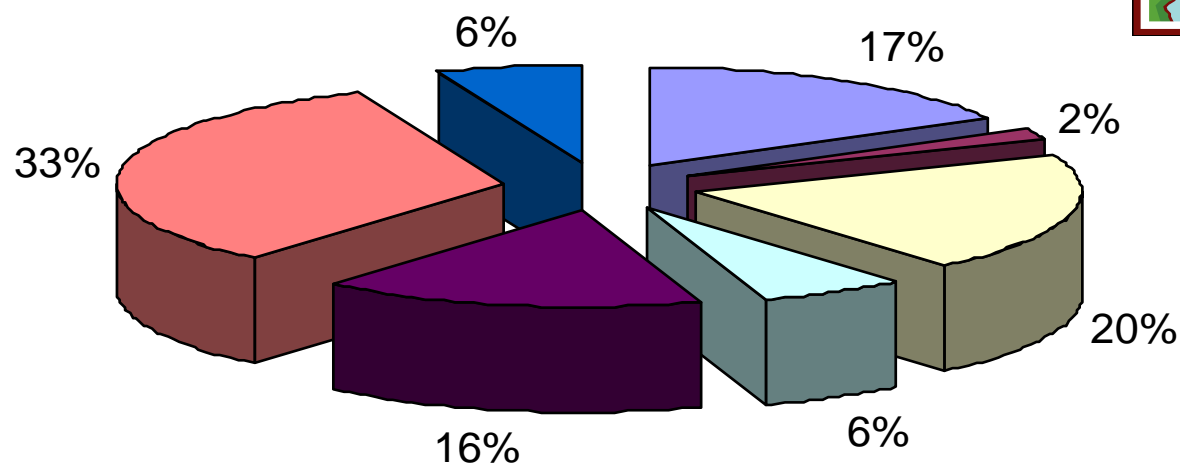


Production of milk (all categories of farms, mln.tons)



22 August 2008, Vilnius

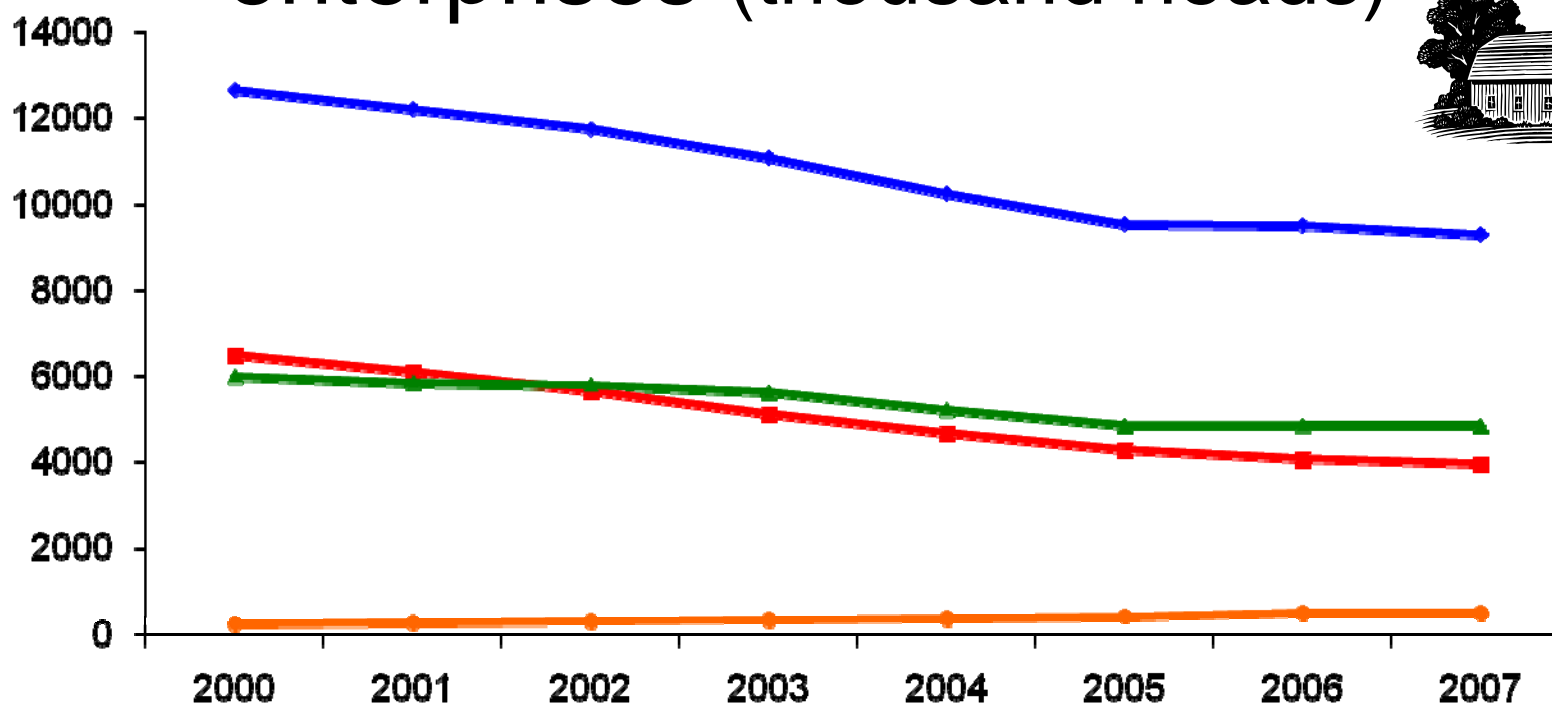
Structure of milk production by Federal regions (2007 year, %)



- Siberian
- Far eastern
- Central
- North-Western
- Southern
- Privilzhskiy
- Ural

22 August 2008, Vilnius

Number of cows in different types of enterprises (thousand heads)



— All types of enterprises

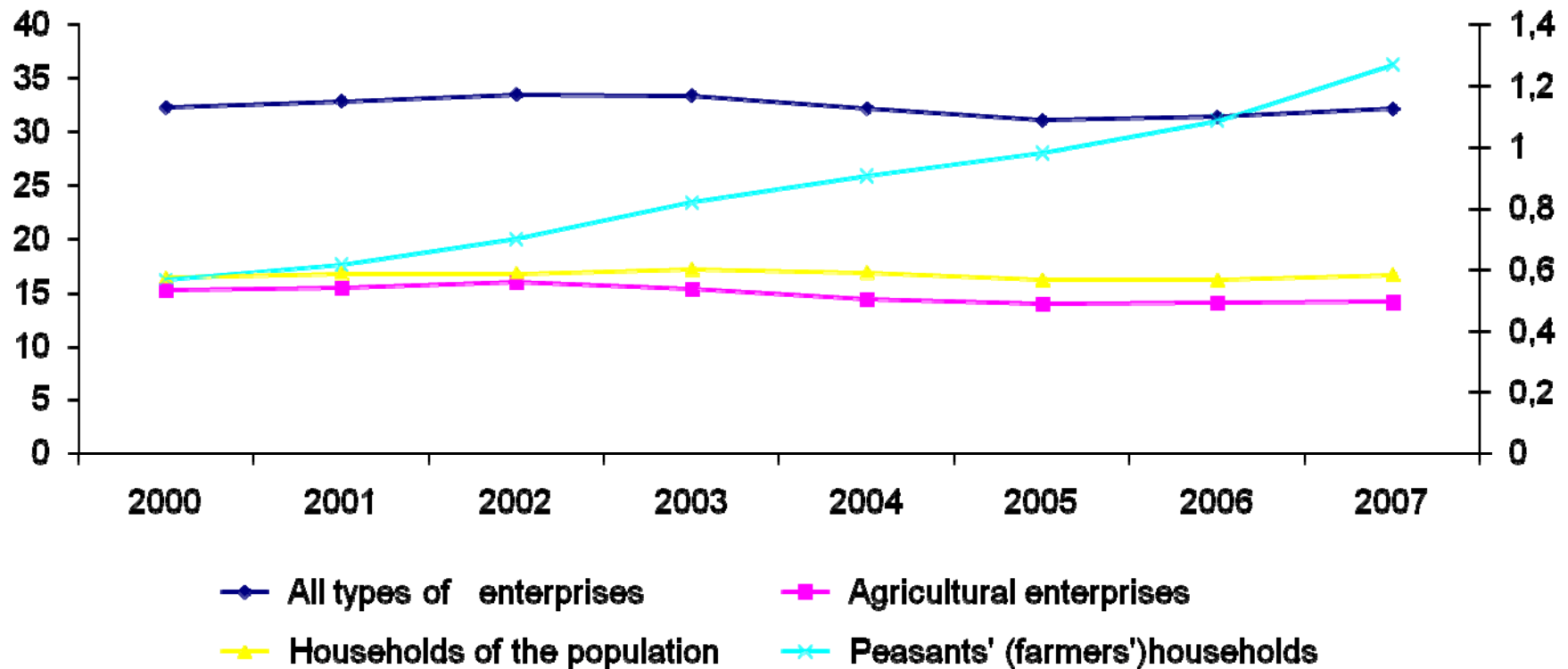
— Agricultural enterprises

— Households of the population

— Peasants' (farmers') households

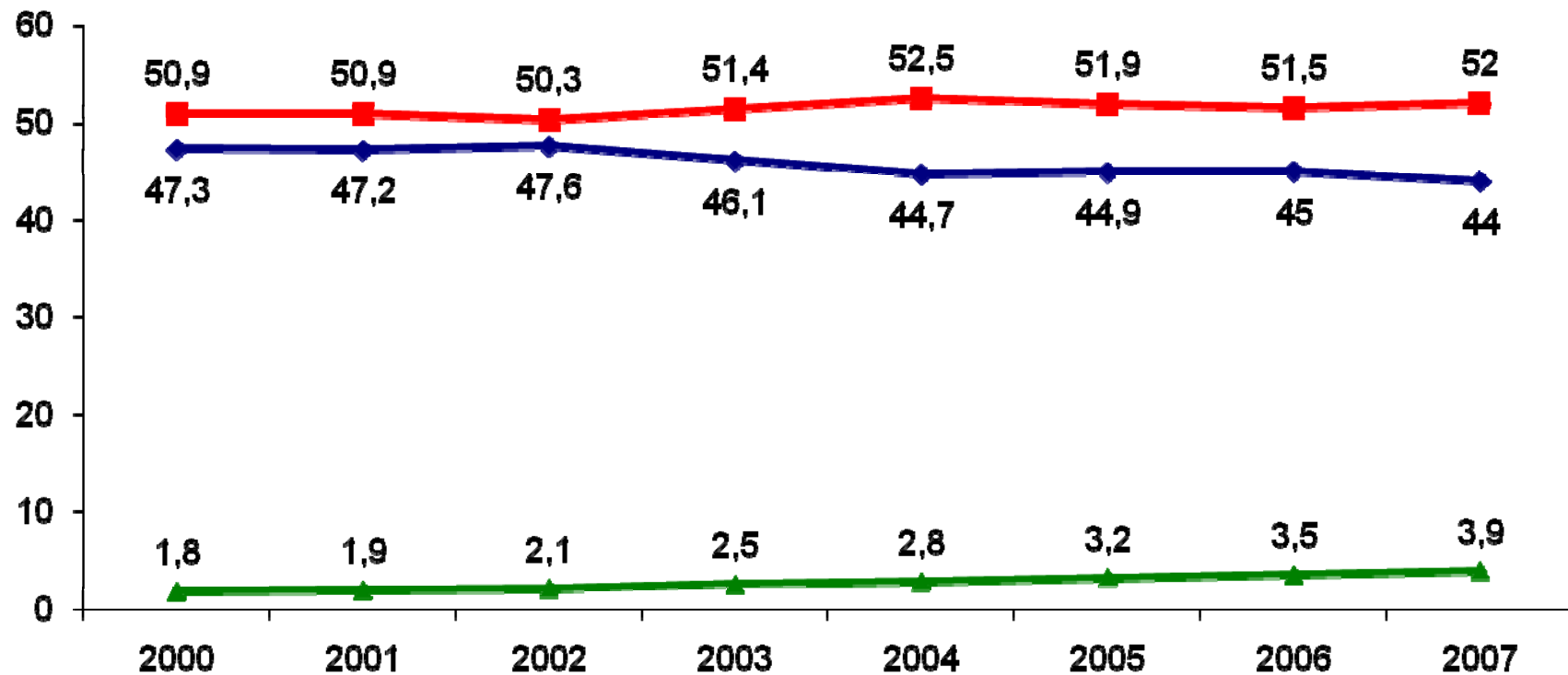
22 August 2008, Vilnius

Amount of milk produced in different types of farms (mln.tons)



22 August 2008, Vilnius

Structure of milk production in different types farms (percents of total value)



◆ Agricultural enterprises

■ Households of the population

▲ Peasants' (farmers') households

22 August 2008, Vilnius

Average milk yield per cow/year in agricultural enterprises (kg)

Region	Year							
	2000	2001	2002	2003	2004	2005	2006	2007
Central	2358	2609	2798	2981	3130	3319	3613	3790
North-Eastern	2973	3350	3637	3878	4059	4295	4629	4753
Southern	2467	2728	2968	3088	2338	3669	3973	4140
Privolzhskiy	2277	2460	2718	2924	2988	3155	3463	3476
Ural	2359	2352	2688	3029	3137	3360	3793	3971
Far-Eastern	1725	1691	1884	1952	1999	2077	2265	2550
TOTAL	2341	2551	2878	2979	3068	3292	3623	3798

22 August 2008, Vilnius

Relative number of animals in different breeds of dairy cattle (percent of total breeding population)

Breed	Number of animals,%			Number of cows, %		
	2005	2006	Difference	2005	2006	Difference
Black and White	55.2	56.5	+1.3	54.9	56.4	+1.5
Simmental	13.4	12.6	- 0.8	13.2	12.2	-1.0
Kholmogorskaya	9.2	9.6	+0.4	9.5	9.8	+0.3
Red Steppe	5.7	5.0	- 0.7	5.7	5.2	- 0.5
Red and White	3.7	3.7	0	3.5	3.6	+0.1
Others (19)	12.8	12.6	- 0.2	13.2	12.8	- 0.4

22 August 2008, Vilnius

Average productivity traits of cows in main breeds of dairy cattle (pedigree part)



Breed	Milk yield, kg			Fat contain, %		
	2005	2006	Difference	2005	2006	Difference
Black and White	4209	4483	+274	3.75	3.75	0
Simmental	3138	3307	+169	3.73	3.76	+0.03
Kholmogorskaya	3791	3972	+181	3.68	3.71	+0.03
Red Steppe	3592	3819	+227	3.82	3.83	+0.01
Red and White	4004	4222	+218	3.80	3.83	+0.03
All breeds	3937	4190	+253	3.76	3.77	+0.01

22 August 2008, Vilnius

The main results of breeding work in pedigree enterprises

Traits	Breeding plants		Breeding reproducers	
	2006	± 2005	2006	± 2005
Number of farms (units)	300	-16	680	-79
Number of animals (thousand heads)	456.1	-10.4	671.3	-39.1
i.e. cows (thousand heads)	255.0	-3.0	370.9	-19.3
Average milk yield, kg	6267	+267	4838	+242
Average fat contain (%)	3.88	+0.01	3.81	0
Profitability rate (%)	19.3	+1.0	17.1	+0.7

**CATTLE SECTOR DEVELOPMENT
IN TRANSITION COUNTRIES OF CEE**

22 August 2008, Vilnius

Thanks For Your Attention!

