
V. Bogdanovic¹, Radica Djedovic¹, P. Perisic¹, M. Vegara²

¹Institute of Animal Sciences, Univeristy of Belgrade, Serbia

²NORAGRIC, Norwegian University of Life Sciences, Ass, Norway

Beef Production in Serbia: Breeds, Present Situation, Breeding Goals



Cattle Breeding in Serbia

Official Statistical Data:
≈1.150.000 head of cattle
(≈800.000 cows and heifers)

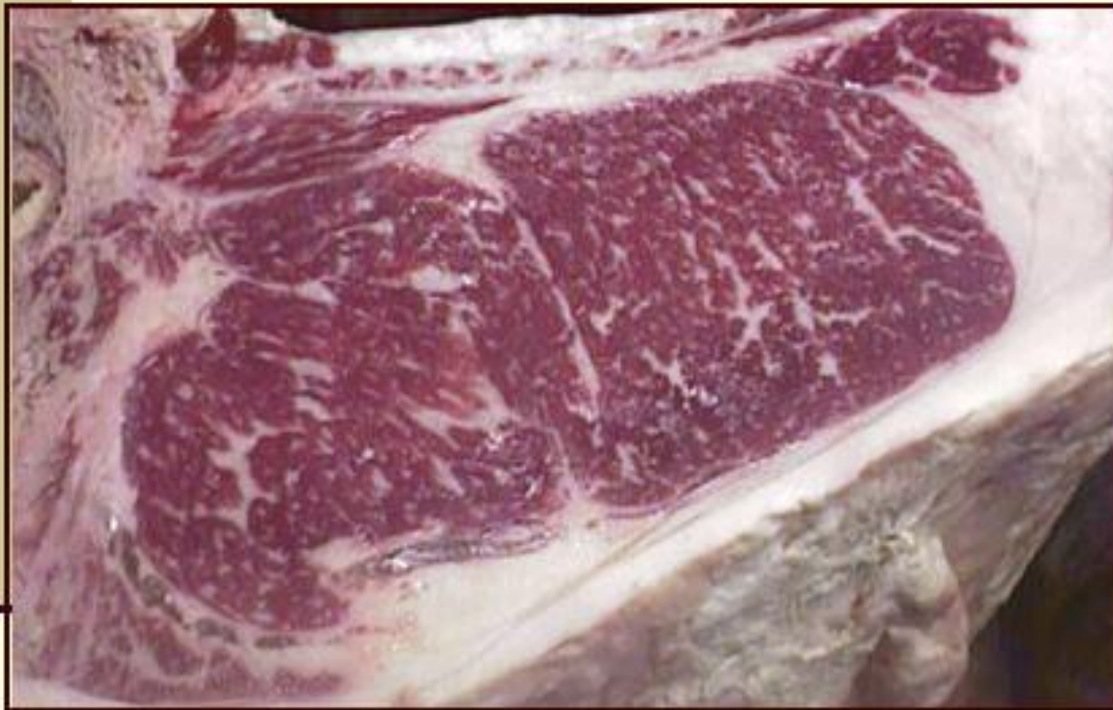




Simmental:
≈ 600.000-650.000

- **Holstein & Black-White,**
- **Beef breeds (mainly Franch breeds),**
- **Various crosses,**
- **Autochthonous cattle breeds:**
 - **Podolian,**
 - **Busa**

Production of beef in Serbia (000 t)



Year	000 t
1990	155
1995	123
2000	103
2001	93
2002	97

Breeding and Rearing Systems for Beef Production in Serbia

- **Crossing,**
- **Pure (straight) breeding,**
- **Intensive system,**
- **Semi-intensive system**

Breeding Goals for Cattle in Serbia

1. **Dual Purpose Breeds – *Simmental*,**
2. **Dairy Breeds – *Holstein & Black-White*,**
3. **Autochthonous Cattle Breeds – *Busa & Podolian***