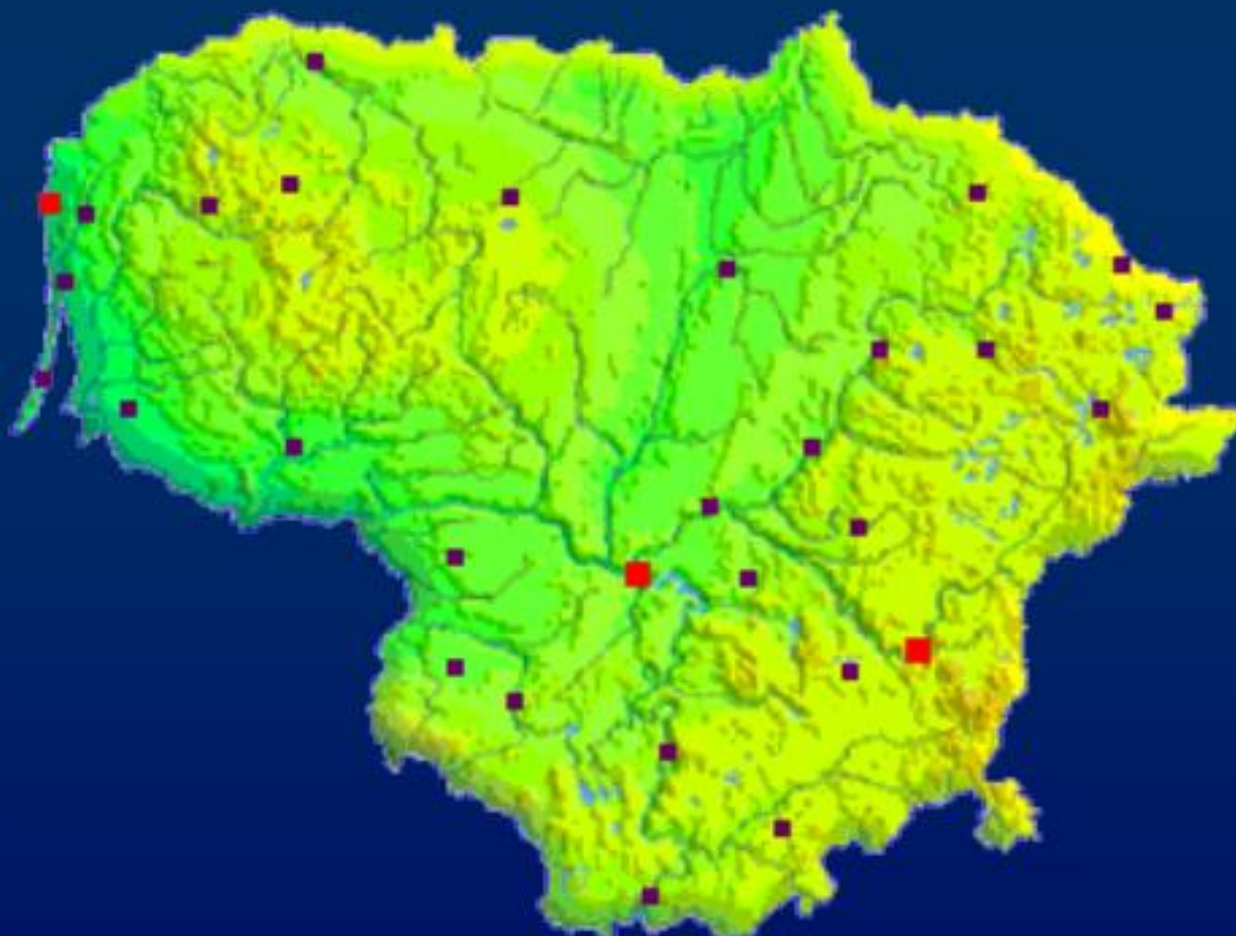


# **SITUATION AND PERSPECTIVE OF BEEF PRODUCTION IN LITHUANIA**

**VIOLETA JUŠKIENĖ**  
Institute of Animal Science of the  
LVA, LITHUANIA



EUROPE WITH  
LITHUANIA POINTED  
OUT



AREA – 65 300 km<sup>2</sup>

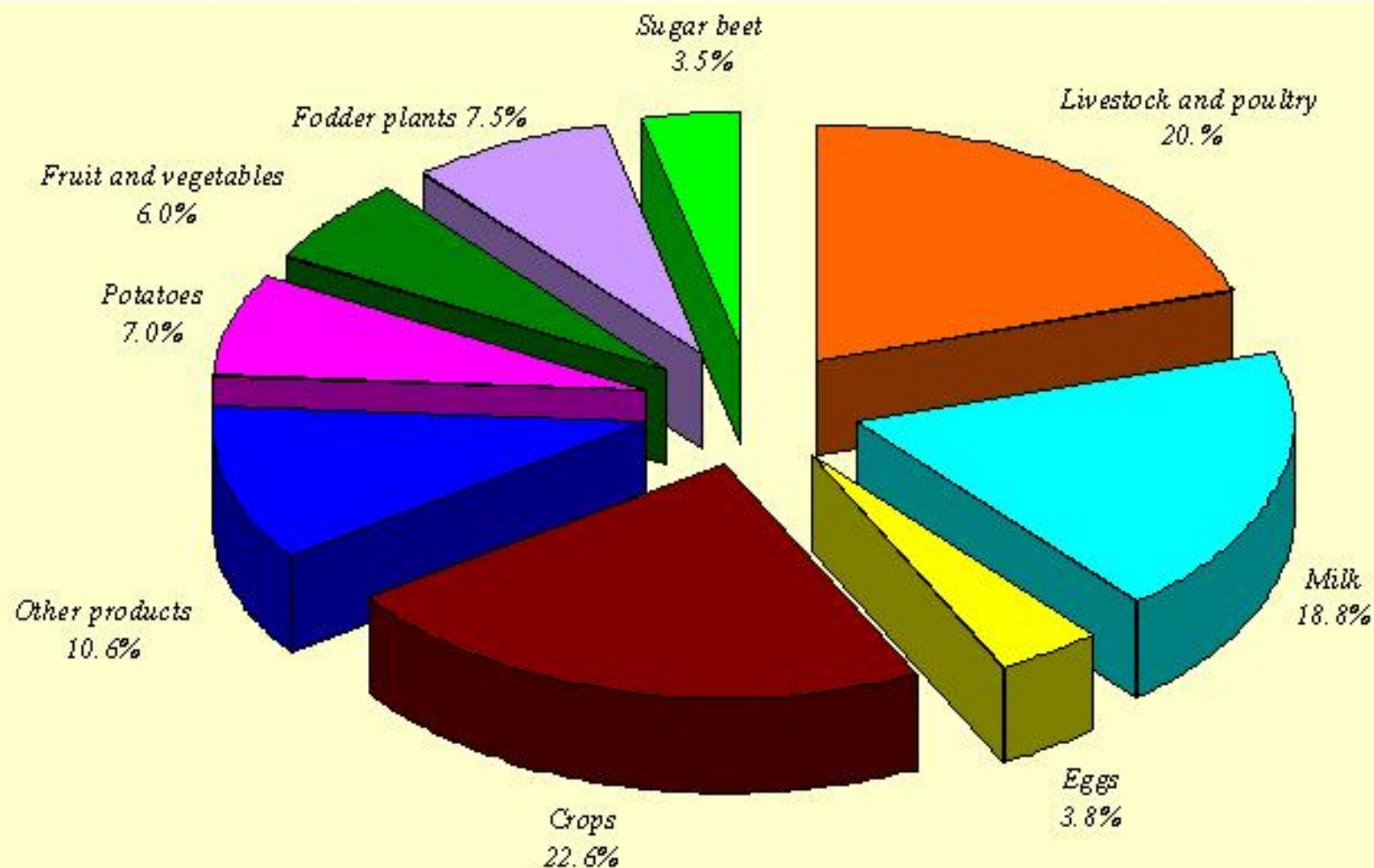
CAPITAL: Vilnius

POPULATION: 3,48 mln.

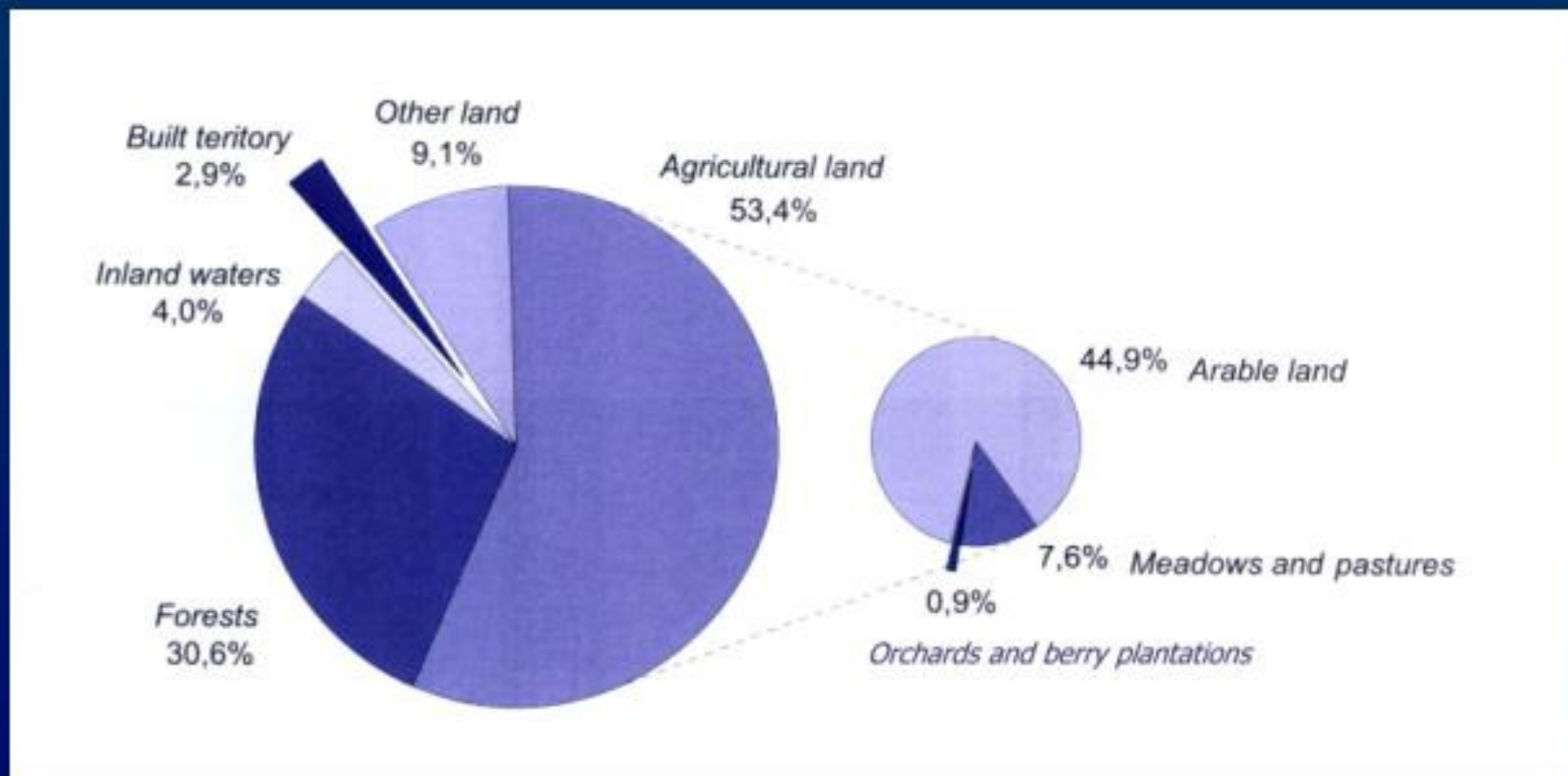
OFFICIAL LANGUAGE: Lithuanian language

CURRENCY: 1 Euro = 3,4528 Litas

# STRUCTURE OF GROSS AGRICULTURAL PRODUCTION



# TOTAL LAND AREA BY LAND CATEGORIES (percent)





# THE MAIN BRANCHES OF AGRICULTURE IN LITHUANIA

\*

Dairy and beef cattle production.

\*

Commercial pig production.

# SUPPLEMENTAL BRANCHES

\*

Sheep breeding.

\*

Goat breeding.

\*

Horse breeding.

\*

Poultry.