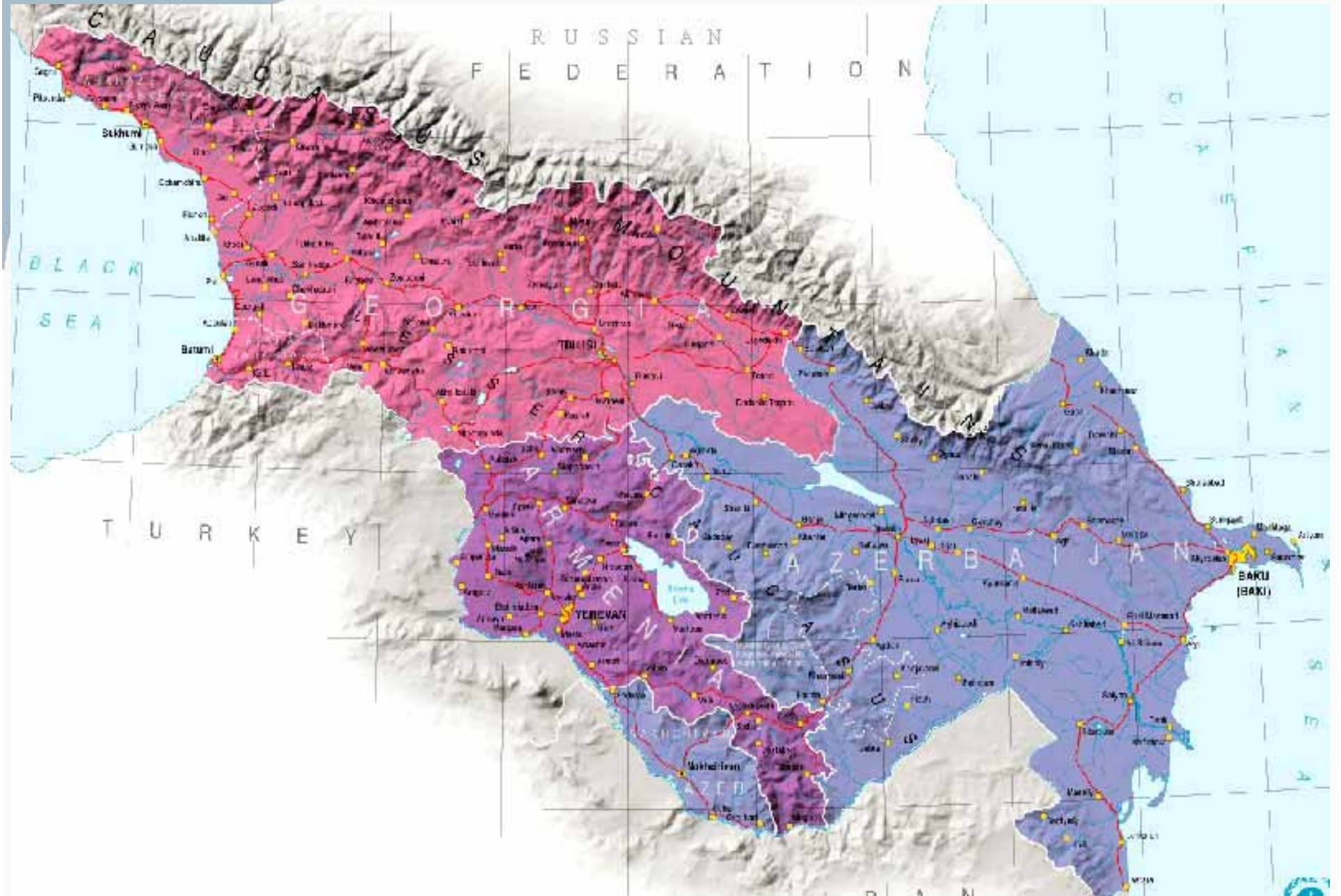


Specific Trends of Development in Small and Medium Cattle Farms in South Caucasus

Mr. Giorgi Saghirashvili
Mrs. Tamar Kartvelishvili

Georgian National Association for Animal Production (GNAAP)
e-mail: gnaap@hotmail.com

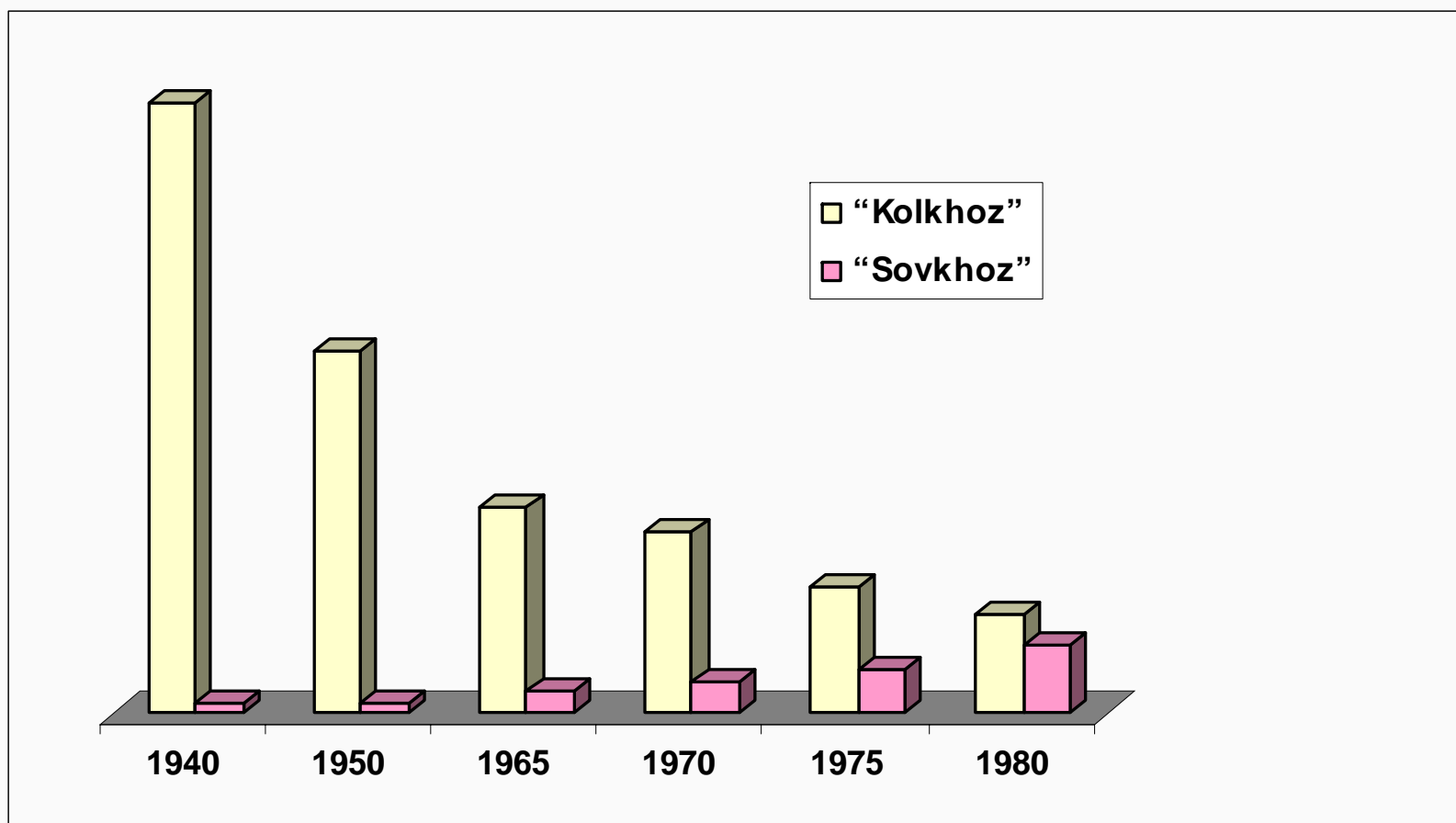
South Caucasus



Number of “Kolkhoz” and “Sovkhoz” in Soviet period (1940-1980years)

	Number of “Kolkhoz”	Number of “Kolkhoz” members (ths)	Number of “Sovkhoz”
1940	4 256	476.1	76
1950	2 535	472.7	80
1965	1 435	462.1	168
1970	1 265	379	231
1975	877	326.6	310
1980	690	303.2	471

Number of “Kolkhoz” and “Sovkhoz” in Soviet period (1940-1980years)



Land operated by holdings and its structure by land use

	Total	Agricultural land	Non-agricultural land
Area, ha	886 766	839 709	47 057
Structure%	100	94.7	5.3

Land operated by holding and its structure by land tenure

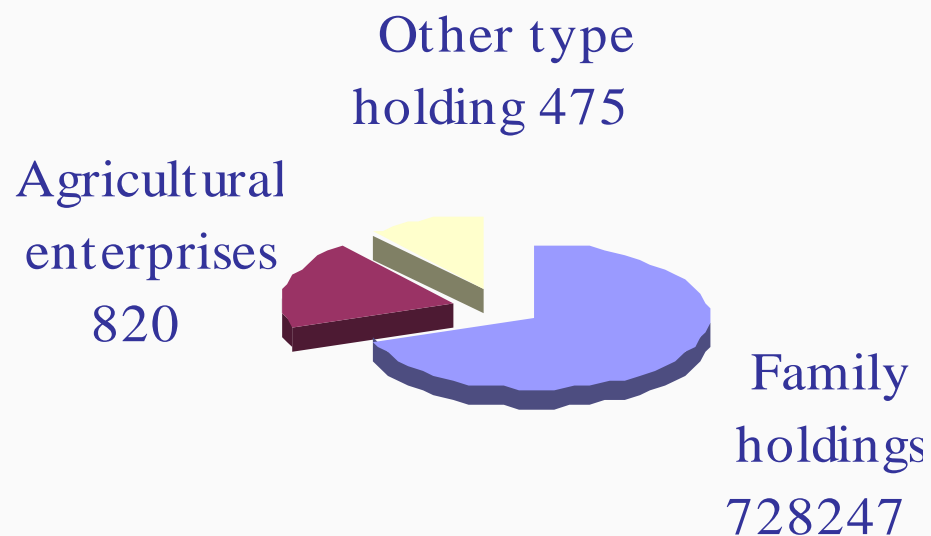
	Total	Owned land	Rented from state	Rented from a private person
Area, ha	886 766	578 281	295 911	10 573
Structure%	100	65.2	33.4	1.4

*Source: Agriculture census of Georgia 2004
Ministry of economic development of Georgia, department of statistics*

Total number of holdings and its structure by holding type

	All holdings	Family holdings	Agricultural enterprises	Other type holding
Number of Holding	729542	728247	820	475
Structure%	100	99.8	0.1	0.1

*Source: Agriculture census of Georgia 2004
Ministry of economic development of Georgia, department of statistics*



GNAAP 2006

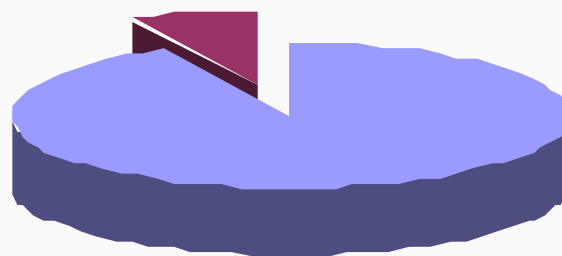
Classification of family holdings by number of operating households

	All family holdings	Single household holdings	Joint holdings
Number of Holding	728 247	728 003	244
Structure%	100	100	0

*Source: Agriculture census of Georgia 2004
Ministry of economic development of Georgia, department of statistics*

Joint holdings

244



Single holding

728003

GNAAP 2006

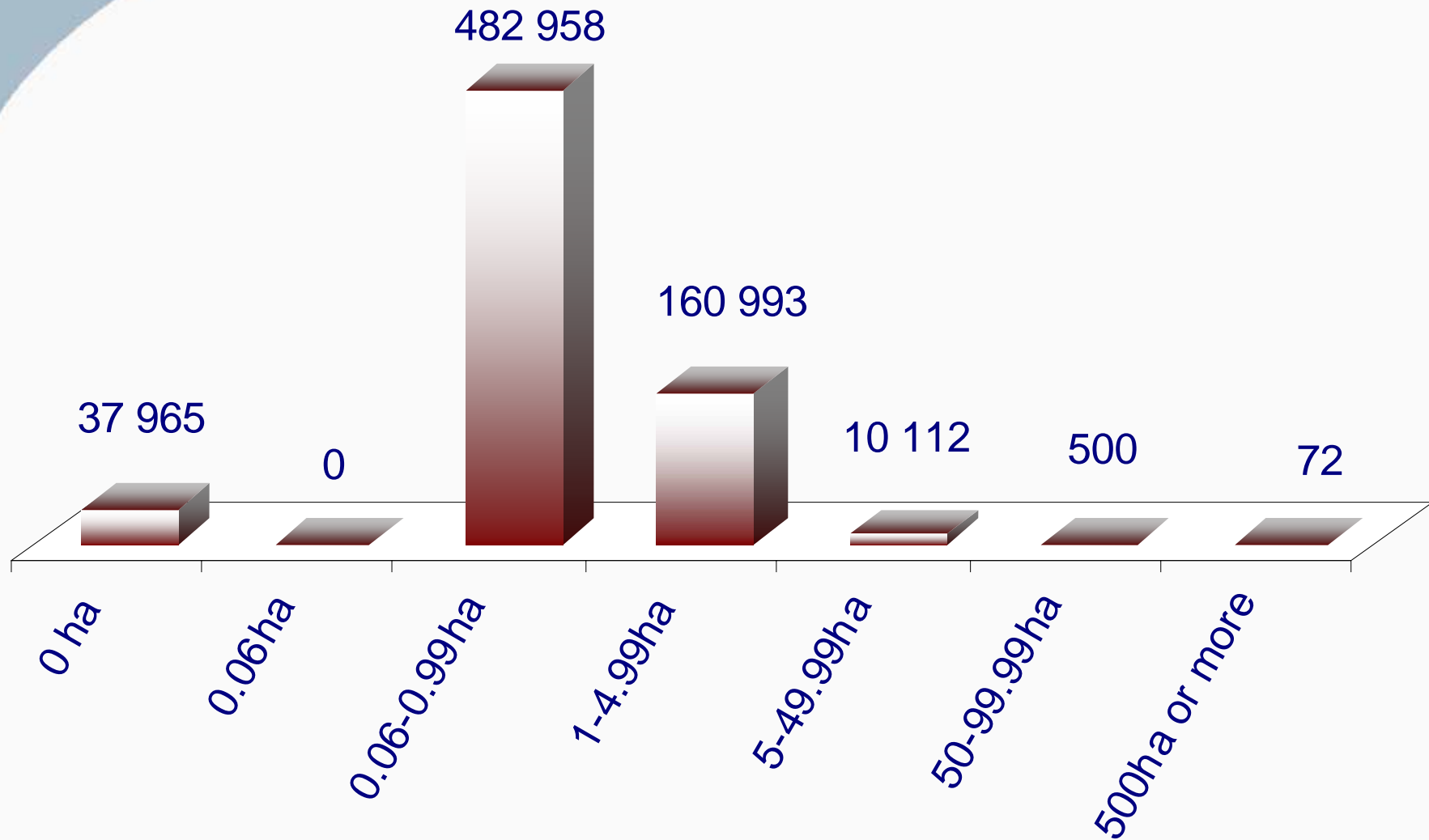
Classification of holdings by total area of agriculture land

	Number of holdings
Without agriculture land	37 965
With agriculture land	691 577
Less than 0.06ha	36 401
0.06-0.99ha	482 958
1-4.99ha	160 993
5-49.99ha	10 112
50-99.99ha	500
100-499ha	541
500ha or more	72

*Source: Agriculture census of Georgia 2004
Ministry of economic development of Georgia, department of statistics*

GNAAP 2006

Classification of holdings by total area of agriculture land



GNAAP 2006

Successful Household in Mountain Region



Agriculture land- 4.5 ha

Cattle – 26

Pig – 65

Sheep – 15

Poultry - 10



Owners of Household are family members.
All members are working in the farm.

Web address: http://www.agrowebcac.org/farm/awgeo/show.php?page=anгр_E

**Goal of production for
livestock products**

SELL

Pork

Milk

Milk products

FAMILY USE

Meat

(Pork, Beef, Poultry, Sheep)

Milk & Milk products

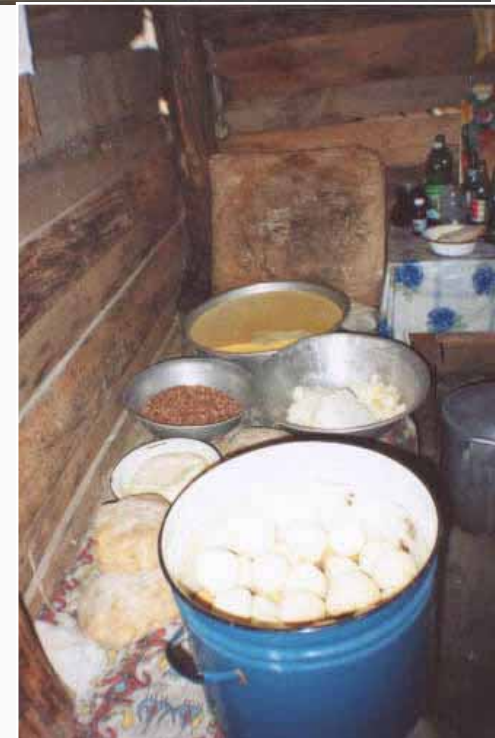
Egg

Wool

Photo Gallery



Livestock products made by traditional methods



Agricultural Cooperative

TKIRI



The “**TKIRI**” Cooperative is established in the Senaki district, in the village of Teklati, since 1994, on the base of Akaki Alania household farm, which was mainly occupied by breeding of local dairy cattle (Megruli red) and produced Megruli and Imeruli cheese.



Web Address - <http://www.agrowebcac.org/farm/gnaap/members/teklati.php>

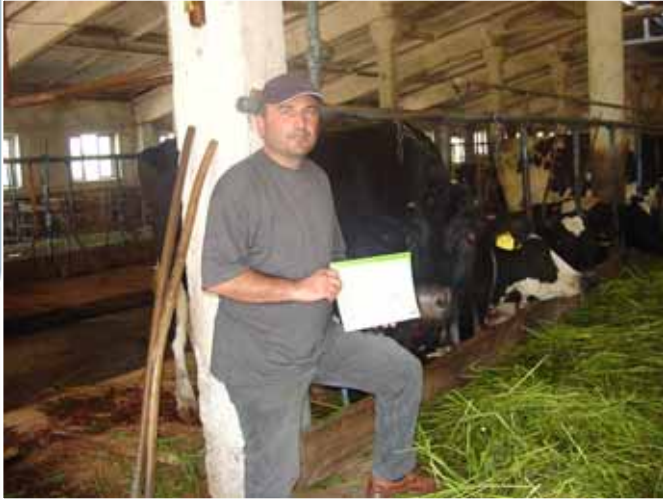
GNAAP 2006

Animal Production

Nowadays, the cooperative owns: 85 heads of Holstein-Friesian cows, 17 heads of Holstein-Friesian female calves, 23 heads of local milk-cows (Megruli red) and 24 heads of Megruli red calves.



Photo Gallery



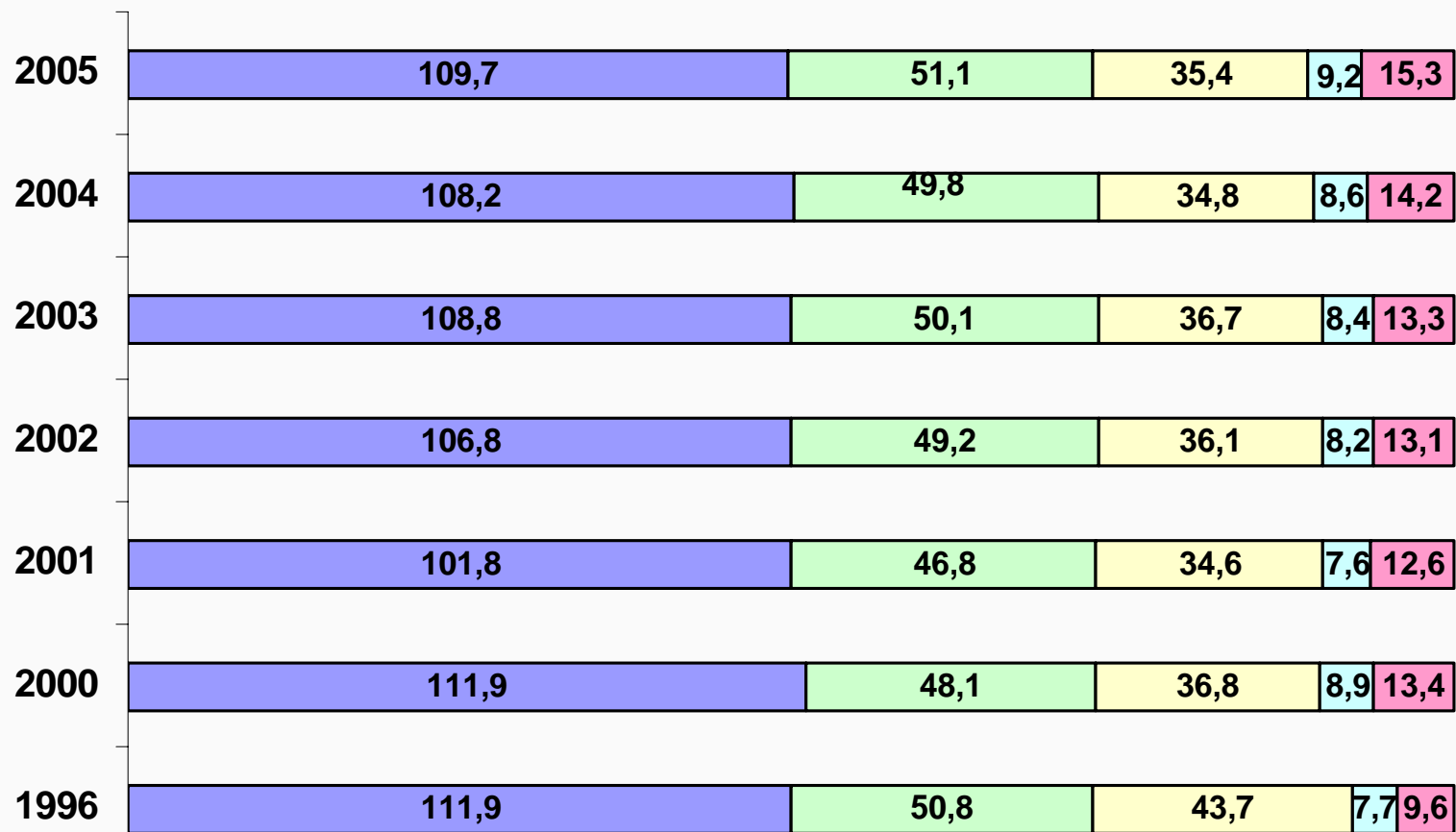
GNAAP 2006

Livestock production output by households

	1996	2000	2001	2002	2003	2004	2005
Meat (in sl. weight), ths. tons	111,9	107,3	101,8	106,8	108,8	108,2	109,7
Beef	50,8	48,1	46,8	49,2	50,1	49,8	51,1
Pork	43,7	36,8	34,6	36,1	36,7	34,8	35,4
Mutton and goat	7,7	8,9	7,6	8,2	8,4	8,6	9,2
Poultry	9,6	13,4	12,6	13,1	13,3	14,2	15,3
Milk, ths. tons	455,8	615,7	707,8	739,6	763,6	779,6	789,8
Eggs, mln. unit	261,4	357,2	385,3	370	391,4	398,8	402,4
Wool, tons	2 821	1 832	1 888	1 964	1 984	2 151	2 246
Honey, tons	683	1 440	1 746	1 847	2 042	2 248	2 365

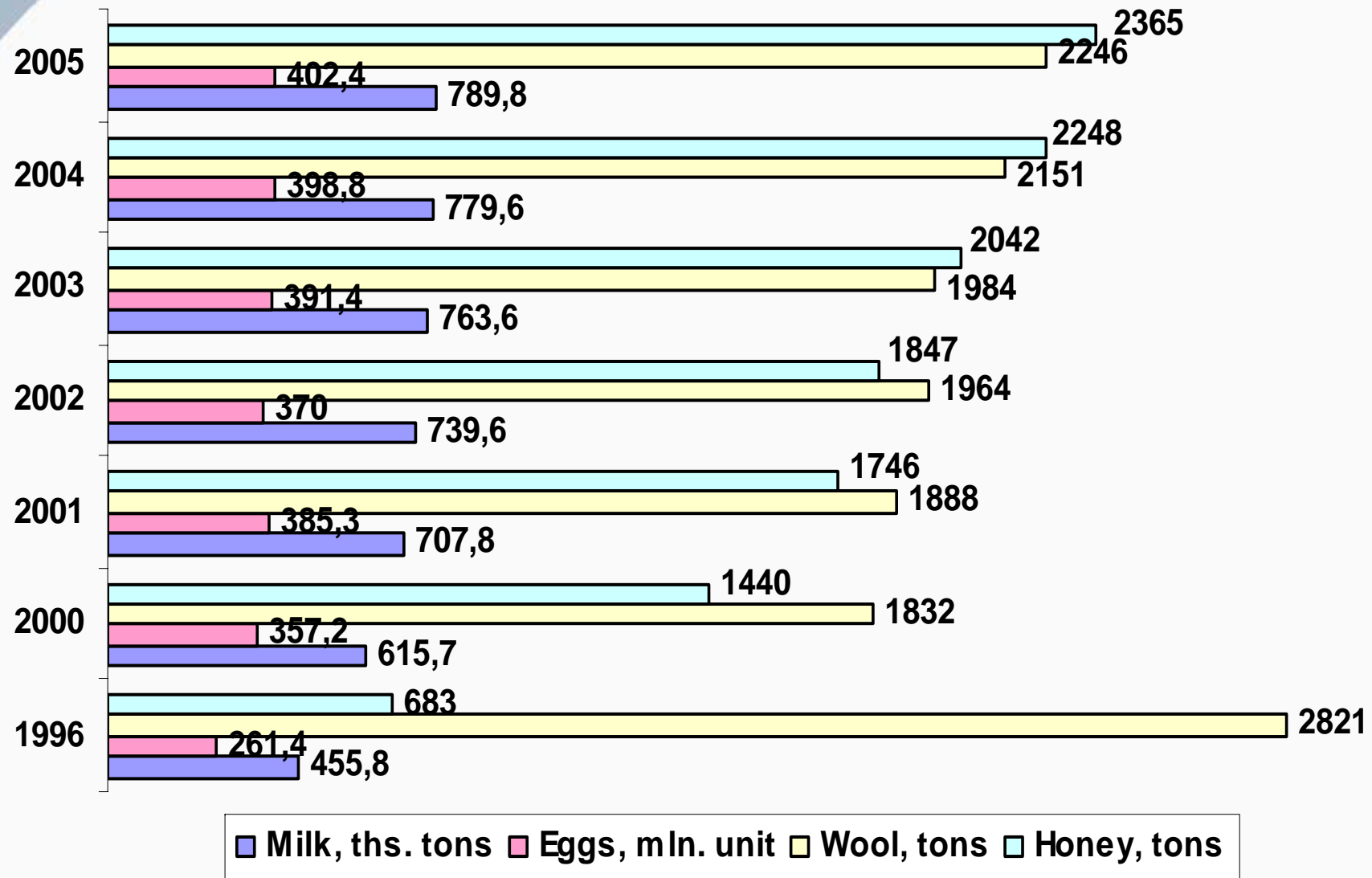
*Source: Georgian Agriculture, statistical abstract 2005
Ministry of economic development of Georgia, department of statistics*

Livestock production output by households



- Meat (in slaughter weight), ths. tons
- Beef
- Pork
- Mutton and goat
- Poultry

Livestock production output by households



Thank you

GNAAP 2006